

REEVING CHART FOR 5/8" 6 X 37 EIPS WIRE ROPE	
BREAKING STRENGTH=41,200 LBS. SAFETY FACTOR OF 5	
PARTS OF LINE	
ONE	TWO
8,240 LBS.	16,480 LBS.

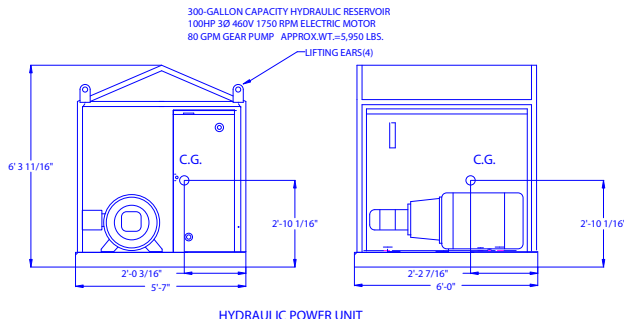
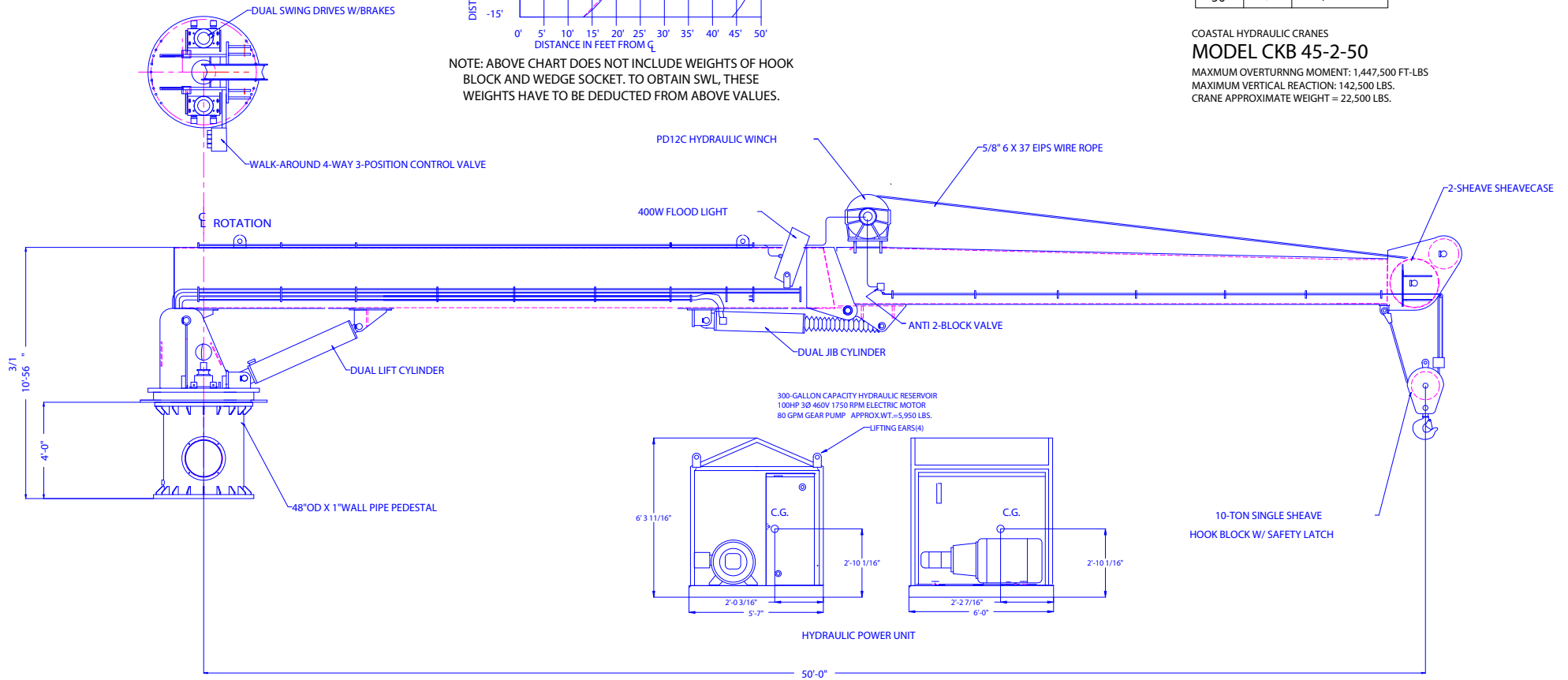
WINCH CAPACITY:  
12,000 LBS. (1ST LAYER)

RATED LOAD IN LBS.		
REACH (FEET)	BOOM ANGLE	DYNAMIC
10	79	60,000
15	73	40,000
20	66	30,000
25	60	24,000
30	53	20,000
35	46	17,000
40	37	15,000
45	26	13,000
50	0	12,000

NOTE: ABOVE CHART DOES NOT INCLUDE WEIGHTS OF HOOK BLOCK AND WEDGE SOCKET. TO OBTAIN SWL, THESE WEIGHTS HAVE TO BE DEDUCTED FROM ABOVE VALUES.

COASTAL HYDRAULIC CRANES  
**MODEL CKB 45-2-50**

MAXIMUM OVERTURNING MOMENT: 1,447,500 FT-LBS  
MAXIMUM VERTICAL REACTION: 142,500 LBS.  
CRANE APPROXIMATE WEIGHT = 22,500 LBS.



10-TON SINGLE SHEAVE  
HOOK BLOCK W/ SAFETY LATCH