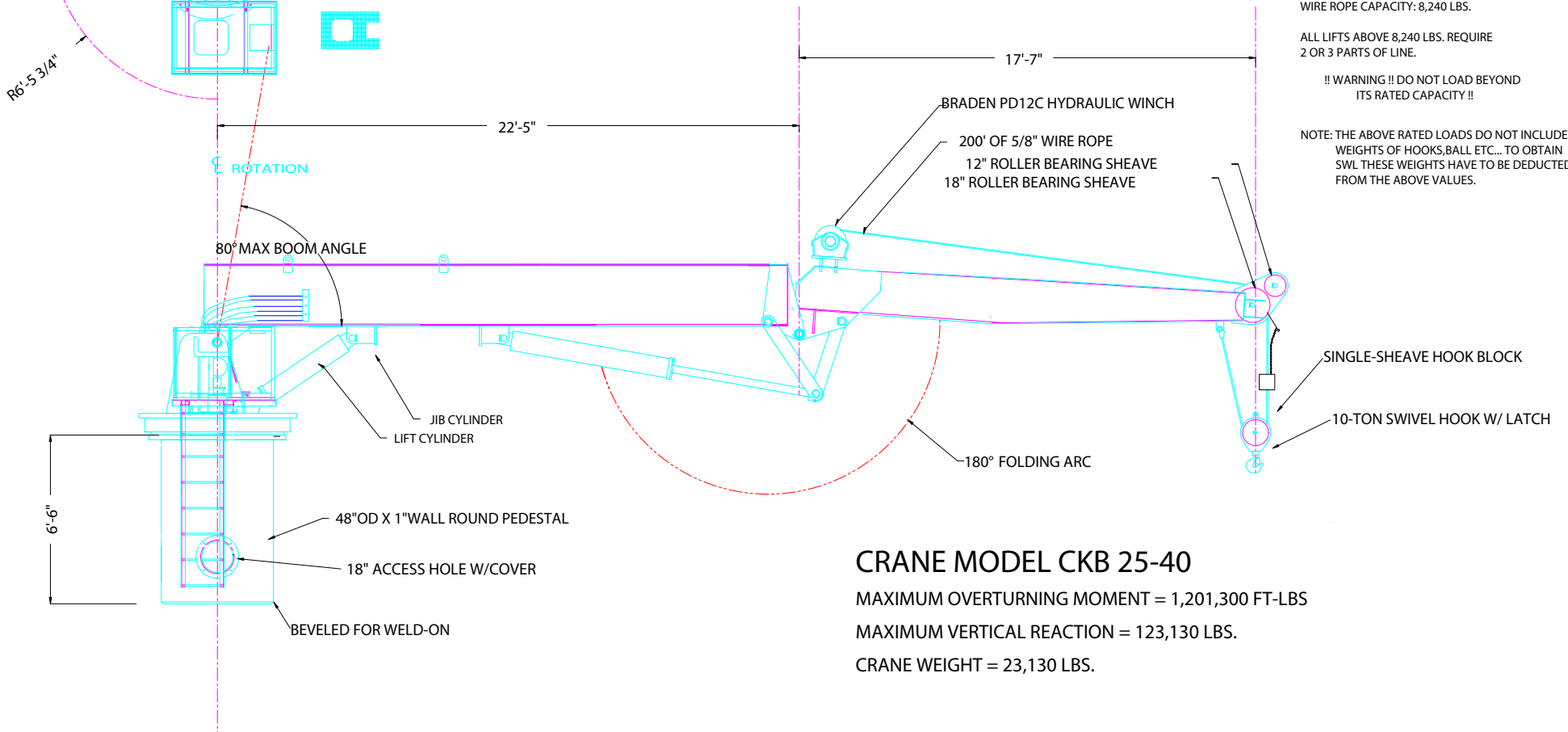
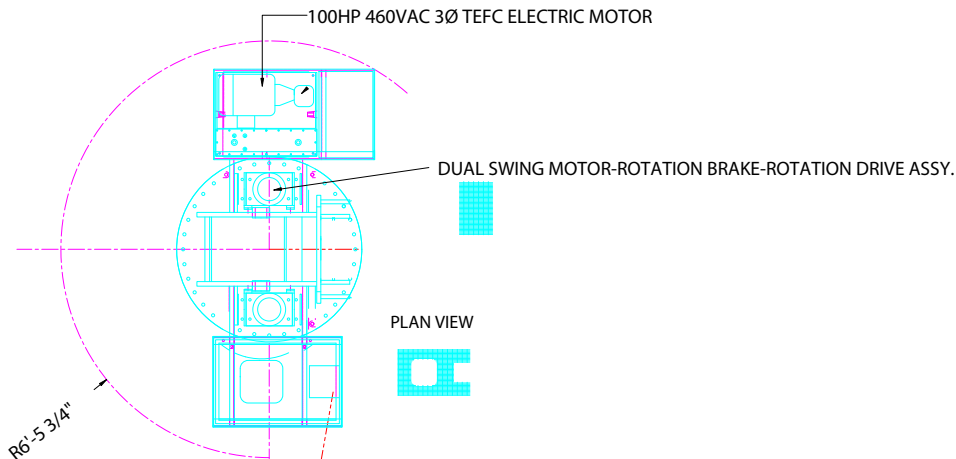


CKB 25-40
CRANE LOAD CHART

RATED LOAD IN LBS.			
REACH IN FEET	BOOM ANGLE	STATIC	DYNAMIC
		10	76°
15	68°	16,600	11,000
20	60°	16,600	11,000
25	51°	16,600	11,000
30	41°	16,600	11,000
35	29°	14,200	9,400
40	0°	12,500	8,300



MAIN WINCH CAPACITY: 12,000 LBS.(BARE DRUM)

WIRE ROPE CAPACITY: 8,240 LBS.

ALL LIFTS ABOVE 8,240 LBS. REQUIRE 2 OR 3 PARTS OF LINE.

!! WARNING !! DO NOT LOAD BEYOND ITS RATED CAPACITY !!

NOTE: THE ABOVE RATED LOADS DO NOT INCLUDE WEIGHTS OF HOOKS,BALL ETC... TO OBTAIN SWL THESE WEIGHTS HAVE TO BE DEDUCTED FROM THE ABOVE VALUES.

CRANE MODEL CKB 25-40

MAXIMUM OVERTURNING MOMENT = 1,201,300 FT-LBS

MAXIMUM VERTICAL REACTION = 123,130 LBS.

CRANE WEIGHT = 23,130 LBS.