

MODEL CKA 15-433

CRANE LOAD CHART

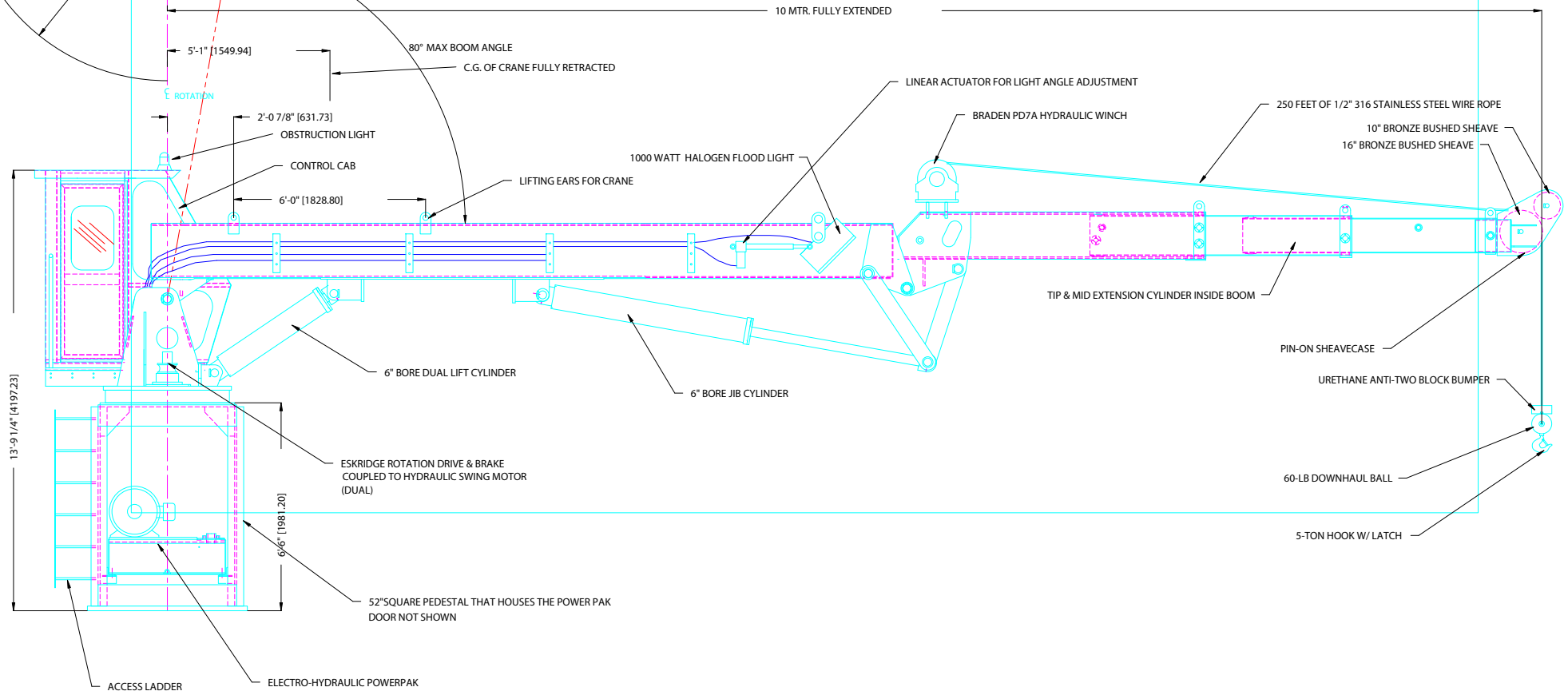
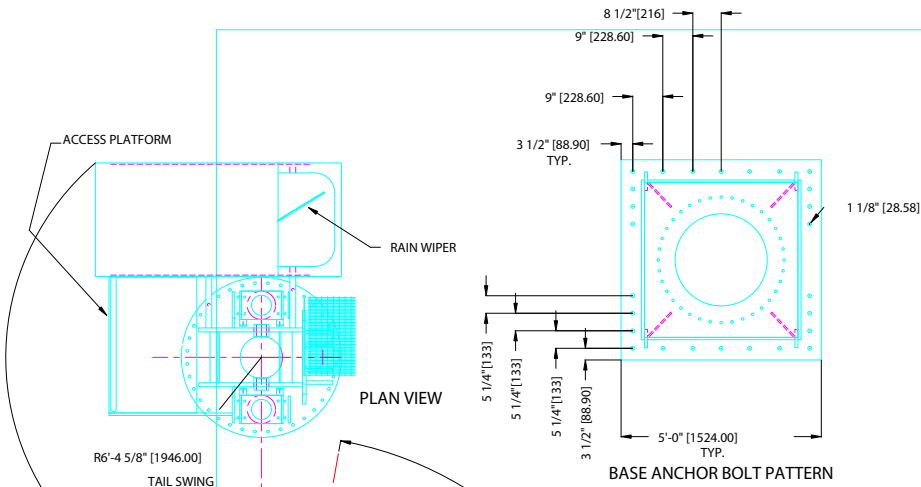
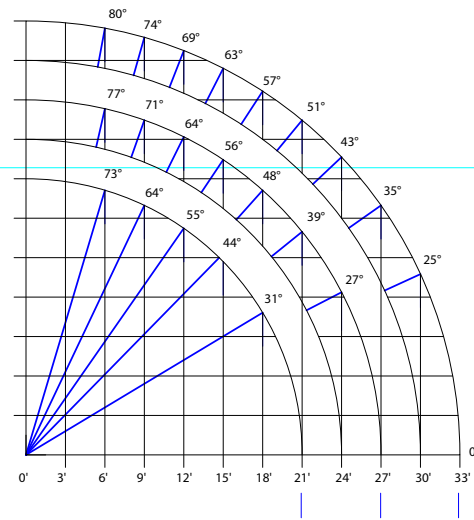
RATED LOAD IN TONS				
MTR.	FEET	RETRACTED	1ST STAGE	2ND STAGE
3.7	6	2.26	2.26	2.26
5.5	9	2.26	2.26	2.26
7.3	12	2.26	2.26	2.26
9.2	15	2.26	2.26	2.26
11	18	2.26	2.26	2.26
12.8	21	2.26	2.2	2.05
14.6	24	~	2.0	1.9
16.5	27	~	1.9	1.7
18.3	30	~	~	1.64
20	33	~	~	1.5

MAXIMUM OVERTURNING MOMENT = 314,522 FT-LBS (426 KN-M)

MAXIMUM VERTICAL REACTION = 42,882 LBS. (191 KN)

CRANE APPROXIMATE WEIGHT = 16,882 LBS. (75 KN)

RATED CAPACITY = 1.5 TON @ 33 FEET (10 M)



13'-9 1/4" [4197.23]

10 MTR. FULLY EXTENDED

ESKRIDGE ROTATION DRIVE & BRAKE
COUPLED TO HYDRAULIC SWING MOTOR
(DUAL)

52" SQUARE PEDESTAL THAT HOUSES THE POWER PAK
DOOR NOT SHOWN

250 FEET OF 1/2" 316 STAINLESS STEEL WIRE ROPE

10" BRONZE BUSHED SHEAVE

16" BRONZE BUSHED SHEAVE

PIN-ON SHEAVECASE

URETHANE ANTI-TWO BLOCK BUMPER

60-LB DOWNHAUL BALL

5-TON HOOK W/ LATCH